

Challenge Yourself



ACCESS JLBCS - AN ANNUAL REVIEW 2019-2020

LOCAL. TRUSTED.



Digital Channel 3.1 DirecTV 3 Dish HD 50

TABLE OF *Contents*

<u>A Message from the President</u>	Page 4
<u>About the Junior League</u>	Page 5
<u>Executive Committee/Board of Directors</u>	Page 6
<u>Community Advisory Council</u>	Page 7
<u>Community Projects</u>	Page 8
<u>Stuff the Bus</u>	Page 12
<u>Communication Council / Finance Council / Fund Development Council</u>	Page 15
<u>Charity Ball</u>	Page 16
<u>Bargain Blitz</u>	Page 18
<u>Sponsor Relations</u>	Page 20
<u>Membership Council</u>	Page 21
<u>Education and Training</u>	Page 22
<u>Provisional Class</u>	Page 24
<u>Sustaining Members</u>	Page 26
<u>JLBCS Founding Members/Past Presidents</u>	Page 28
<u>Sponsors</u>	Page 30

A message from the *President...*

Dear Junior League Members, Partners, and Friends,

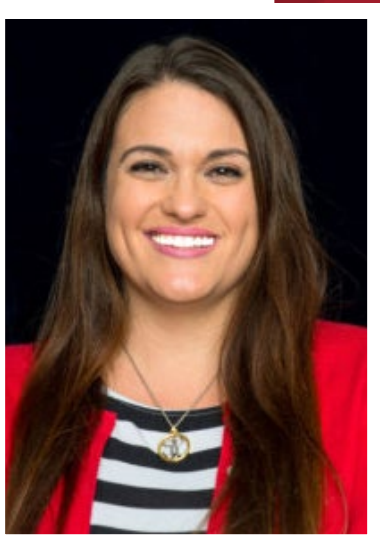
Once again, another great League year is coming to an end. We accomplished so much this year, and I am excited to share it with all of you. As many of you know, my theme this year was Challenge Yourself. I asked members at the beginning of the year to try one new thing this year, one thing outside of their comfort zone. A challenge to themselves. My intention with doing this was to focus on one specific part of our mission - developing the potential of women. I felt emphasizing this would directly impact the other two parts of our mission - promoting voluntarism and improving our communities through the effective action and leadership of trained volunteers. I challenged my fellow members and they delivered! We had one of our most successful years. The leadership, talent, and work these ladies put into this League over the last year is amazing and I am so proud to volunteer alongside them.

We started by purchasing more school supplies than ever before - \$110,000 worth! We were able to provide school supplies for those students in need at every elementary school in the Bryan and College Station Independent School Districts, as well as many of the intermediate schools. We also participated in five community projects this year, including the Brazos Valley Food Bank's Backpack program, Ronald McDonald House, United Way Baby Bundles, and CSISD Education Foundation. We also provided more than \$12,000 in grants to various organizations in the community.

Not only did our members step up, our successful year was also possible because of our wonderful sponsors and supporters! In December, we went back to the Moulin Rouge at our annual Charity Ball. Over 800 guests attended making it one of our most successful nights ever! We raised over \$360,000 to continue our community reach and impact. This past March, we again hosted our annual rummage sale, Bargain Blitz. Again, our members showed up like never before and made it a hugely successful sale, raising over \$31,000! Again, none of this would have been possible without our members' fundraising efforts or our sponsors' generosity. With this upward trend from year to year, we are able to do more and more in Bryan-College Station, continuing League's legacy of improving our community.

This past year has been one of the best and most challenging years I have experienced. I have learned so much from my fellow members. I especially want to thank my Executive team as well as the wonderful leadership of our committee chairs. Without them and their tireless work, this year would not have been the success that it was. I am thankful and blessed that I have been a part of this organization!

Thank you, *Emily Fisher*



ABOUT *the Junior League*



JUNIOR LEAGUE OF
BRYAN-COLLEGE STATION

Contact Us

PHYSICAL ADDRESS

Brazos Center
3232 Briarcrest Dr
Bryan, TX 77802

MAILING ADDRESS

P.O. Box 2623
Bryan, TX 77805

BY PHONE

979.774.4759

ONLINE

www.jlbcs.org

MISSION STATEMENT

The Junior League of Bryan-College Station, Inc. is an organization of women committed to promoting voluntarism, developing the potential of women, and improving our community through the effective action and leadership of trained volunteers. Its purpose is exclusively educational and charitable.

REACHING OUT STATEMENT

The Association of Junior Leagues International, Inc. reaches out to women of all races, religions and national origins who demonstrate an interest in and commitment to voluntarism.

VISION STATEMENT

We will strengthen the well-being and future of Bryan-College Station's children and youth through the dedicated service of trained volunteers.

Executive Committee

Front Row (L to R):
Katerina Hall (Fund Development VP)
Emily Fisher (President)
Amy Thompson (Executive Vice President)
Kristina Regan (Community VP)

Back Row (L to R):
Elisabeth Thompson (Communications VP)
Erica Fisher (Finance VP)

Not pictured:
Cristina Vela Recio (Membership VP)



Board of Directors

Front Row (L to R):
Amy Thompson (Executive Vice President)
Emily Fisher (President)
Kristina Regan (Community VP)

Back Row (L to R):
Katerina Hall (Fund Development VP)
Elisabeth Thompson (Communications VP)
Michelle Peacock (At-Large Board Member)
Courtney Bosquez (At-Large Board Member)
Erica Fisher (Finance VP)

Not Pictured:
Megan Chernosky (At-Large Board Member), **Blair Krebs** (At-Large Board Member), **Cassie Medlin** (At-Large Board Member), **Ellen Moritz** (At-Large Board Member), **Erin Schneider** (At-Large Board Member), **Ashley Seelig** (At-Large Board Member), **Cristina Vela Recio** (Membership VP), **Katie Zwahr** (At-Large Board Member)



Community Advisory Council

THE COMMUNITY ADVISORY COUNCIL (CAC) SERVES IN AN ADVISORY ROLE FOR JLBCS, ENABLING THE ORGANIZATION TO MAXIMIZE ITS COMMUNITY IMPACT AND VOLUNTEER OPPORTUNITIES.

Members are well-respected leaders across the Bryan-College Station community who are chosen based on their specific life and work experiences. CAC meets periodically throughout the year to provide a forum for a wide range of topics. CAC members offer counsel and expertise to League members about League’s current impact in the community, the community’s specific needs, and how League could better meet those needs through community projects, marketing strategies, and financial opportunities.

COMMUNITY REPRESENTATIVES

Debbie Eller	City of College Station	(2015-2020)
Chris Field	Founder and Executive Director, Mercy Project	(2015-2020)
Grant Hackethorn	Assistant Principal, Wellborn Middle School	(2017-2020)
Rayne Knight-Zingelmann	President, CR Systems, Inc.	(2017-2020)
Sally Reigle	REALTOR, KellerWilliams Bryan/College Station	(2017-2020)
Oscee Wheatfall, III	Assistant Director for Intramural Sports, TAMU	(2017-2020)
Hugo Ibarra	Community Outreach Officer, Bryan Independent School District	(2020-2022)

JUNIOR LEAGUE REPRESENTATIVES

Emily Fisher	President
Amy Thompson	Executive Vice President
Kristina Regan	Community Vice President
Elisabeth Reyes	Communications Vice President
LeeAnn Pickett	Chair, Community Grants
Sarah Krzystofik	Immediate Past President



Community Projects

The **COMMUNITY COUNCIL** is made up of chairs from the different community committees including Community Grants, Research and Development, Brazos Valley Food Bank, CSISD Education Foundation - Book Fair Bonanza, United Way Baby Bundles, Ronald McDonald Happy Wheels, and Stuff the Bus. This council provides information to League members about which community projects need League’s assistance, and the committees coordinate with the community projects to organize the volunteer jobs for League members.

COMMUNITY COUNCIL MEMBERS

Kristina Regan (Community VP), Valerie Brown (CSISD Education Foundation - Book Fair Bonanza Chair), Lauren Kelley (Brazos Valley Food Bank Backpack Program Chair), LeeAnn Pickett (Community Grants Chair), Baili Rhodes (Project Unity Resource Center Chair), Karen Rust (Stuff the Bus Chair), and Lindsey Terry (Ronald McDonald House - Happy Wheels Cart Chair)



The **COMMUNITY GRANTS COMMITTEE** researches, develops, and conducts the review process for community projects, short term grants, and “Done in a Day” events. The committee works with various nonprofits throughout the Brazos Valley to identify ways in which the Junior League of Bryan-College Station, Inc. can assist the nonprofits in achieving their mission and goals. During the 2019-2020 League year, Community Grants awarded **over \$15,000** in short term grants to provide assistance to Boys & Girls Club, Brazos Valley Rehabilitation Center, BCS Together, Locks of Refuge, Chrissy’s Closet through College Station ISD Education Foundation, Spirit of Christmas - Bridge Ministries, Adapted Vocational Skills Lab through Bryan ISD and Unbound BCS, Not In My City.

COMMUNITY GRANTS COMMITTEE MEMBERS

LeeAnn Pickett (Chair), Brynn Biggs, Jen Brazeal, Kati Clark, Mary House, Sarah Northcutt, Rachel Schimank, and Katelyn Yamold

The **RESEARCH AND DEVELOPMENT COMMITTEE** researches internal and external matters pertaining to the community as identified by the Board of Directors. The committee tracks major trends, internal changes, and external changes, identifies unmet program and service needs, considers external solutions, and evaluates the effectiveness of existing programs as they develop their recommendations.

RESEARCH & DEVELOPMENT COMMITTEE MEMBERS

Sarah Krzystofik (Chair), Ashton Rea, and Brianna Tofel

BRAZOS VALLEY FOOD BANK BACKPACK PROGRAM

The Brazos Valley Food Bank Backpack Program works to address childhood hunger by providing food to children at risk of going hungry over the weekend in 6 counties (Brazos, Burleson, Grimes, Madison, Robertson and Washington). Through the Backpack Program, bags of food are provided to partner schools during the school year and youth programs over the summer. Twice a month, the ladies of the Junior League of Bryan-College Station, Inc. meet at the Brazos Valley Food Bank to fill these backpacks with food for the children to take home. Over the course of a single school year, League members will stuff **over 5,400 backpacks** for children in need. Additionally, League also assists the Brazos Valley Food Bank with their two annual events, Feast of Caring (held in August) and KBTX’s Food for Families Food Drive (held in December).

BRAZOS VALLEY FOOD BANK BACKPACK PROGRAM COMMITTEE MEMBERS

Lauren Kelley (Chair), Nicole Becka, Cari Cesaro-Hoffman, Alyssa Douglas, Claudene Marshall, Julie Masek, Eva Ostigin, Melissa “Mo” Rugh, Jenna Schwartz, Katie Trampota, and Stephanie White



Community Projects continued

RONALD MCDONALD HOUSE HAPPY WHEELS CARTS PROGRAM

A few times per month, League volunteers assist with the Ronald McDonald House Happy Wheels Carts Program at local hospitals in the Bryan-College Station community. The Happy Wheels Cart delivers comfort and care items directly to families as they sit in waiting rooms and by their child's bedside. These carts – wheeled by League volunteers from room to room – provide snacks, toys, games, and personal hygiene items to patients and families staying in the hospital. This allows them to stay where they are needed most without having to leave to get food, toiletries, and other commonly needed items.



RONALD MCDONALD HOUSE HAPPY WHEELS CARTS PROGRAM MEMBERS

Lindsay Terry (Chair), Ashley Andreski, Melissa Buchanan, Melia Jones, Torie Noellsch, Christy Service, and Kelly Wood

UNITED WAY BABY BUNDLES

The United Way Baby Bundle program works with the Labor and Delivery departments in local hospitals to provide a bundle to each family following the birth of their new baby. Each Baby Bundle includes a tote packed with a board book suitable for parents to begin reading to the baby immediately, a developmental toy, and valuable resources including reading tips and ideas, resources on developmental milestones, and information on community services. Volunteers assemble and deliver Baby Bundles to area hospitals monthly. By providing even one book to every newborn, each baby begins their reading journey that much sooner and that much stronger by instantly having access to books at home.

UNITED WAY BABY BUNDLES MEMBERS

Chloe Bennett (Chair), Mary Beth Friebele, Cali Harper, Jennifer Hebert, Lamar Ontko, and Melanie Pollard

CSISD EDUCATION FOUNDATION BOOK FAIR BONANZA

The Book Fair Bonanza, as part of the Amy Anderson Literacy Legacy Program, ensures that each student enrolled in Pre-K and Head Start selects their own book(s), helping build critical early literacy skills. League funding of Book Fair Bonanza doubled the impact for local children by providing a second book fair for young students to build their personal library. League volunteers acted as personal shoppers at book fairs, helping students choose age appropriate books. They also served as cashiers, helping students check out after choosing their books.

CSISD EDUCATION FOUNDATION BOOK FAIR BONANZA MEMBERS

Valerie Brown (Chair), Jennifer Bramwell, Melissa Moye, and Jen Verdugo

Expect more when you're expecting

While you're looking to the next phase of your life, we're looking to make that transition as easy as possible. Our Women's Health department provides quality care through:

- OB/GYN
- Women's health education and support
- Integrated Labor & Delivery department
- Only Level III NICU with NICVIEW secure online viewing in the Brazos Valley

Focus on your little one.
We'll focus on giving you both everything you need.

BSWHealth.com/CollegeStation
979.207.0100



Physicians provide clinical services as members of the medical staff at one of Baylor Scott & White Health's subsidiary, community or affiliated medical centers and do not provide clinical services as employees or agents of those medical centers or Baylor Scott & White Health. ©2020 Baylor Scott & White Health. 99-ALL-106233 GD

Stuff the Bus

THE SIGNATURE PROJECT FOR THE JUNIOR LEAGUE OF BRYAN- COLLEGE STATION, INC.

A major initiative and the primary emphasis of Stuff the Bus is to provide school supplies to more than **16,000 school children** in the Bryan and College Station area school districts. League, along with its gracious community partners, has distributed school supplies to over **165,000 students since the project's inception in 2000**. Stuff the Bus is organized and managed from start to finish by members of League, and the membership donates **more than 2,000 volunteer hours** between July and August to ensure the success of this project. Beginning in June, Stuff the Bus school buses are placed at various locations around town and community members are encouraged to make school supply donations. After the Stuff the Bus boxes are collected, the donated supplies are then tallied, sorted, and donated to each of the school districts. The positive impact Stuff the Bus brings to local school children is tremendous, and League is honored to work with a community that ensures the success of this important initiative. Our most precious resource is our children. By supporting Stuff the Bus and donating school supplies to this project, you ensure our local children and families have success in school year after year.

2019 STUFF THE BUS IMPACT

In 2019, The Junior League of Bryan-College Station, Inc. purchased **\$110,000 worth of supplies** for elementary and intermediate schools of the Bryan Independent School District (BISD) and the College Station Independent School District (CSISD). Over the multi-day supply drive, League successfully brought in approximately **30,000 items**, and over **\$14,500 in monetary donations**.

STUFF THE BUS COMMITTEE MEMBERS

Karen Rust (Chair), **Hayley Harrison** (Step Up), Laura Groves, Jamie Johnson, Christi Keys, Yecika Luna, Ashley Merryman, Victoria Recek, Gisella Sericano-Sewell, Korie Vakey, Diana Wagner, Christine Weigle, Lauren Welford, and Kristen Willingham



Building MOMENTUM Around You.



AMERICAN MOMENTUM BANK®

As a community bank, we build long-lasting relationships one customer at a time. As the largest privately-owned financial institution in The Brazos Valley, we offer state-of-the-art banking technology, security and financing solutions entirely dedicated to building financial momentum around you.

That's the strength of **Momentum**.

Visit one of our branches or americanmomentum.bank

Communications Council

The Communications Council is made up of the committee chairs of the **Access JLBCS, Publications, Public Relations, and Technology committees**. Collectively, Communications Council is responsible for producing League's annual Access JLBCS report which is a review of the League year, communicating with League members through monthly e-updates, reconnecting with sustaining members via a bi-annual update, building relationships with media sponsors, and maintaining the JLBCS website.

COMMUNICATIONS COUNCIL MEMBERS

Elisabeth Thompson (Communications VP), Holly Kozlowski (Publications Chair), Ashley Schnell (Technology Chair), Ashley Seelig (Public Relations Chair), and Hannah Sodolak (Access JLBCS Chair)

Finance Council

The Finance Council oversees all financial matters concerning the administration of League and interpretation of existing financial policies. The Finance Council prepares the annual budget and has oversight of endowed and reserved funds.

FINANCE COUNCIL MEMBERS

Emily Fisher (President), Erica Fisher (Finance VP), Sarah Leveroni (Assistant Treasurer VP), and Amy Thompson (Executive VP)

Fund Development Council

Fund Development Council is the fundraising arm of The Junior League of Bryan-College Station, Inc. and consists of the chairs of three committees: **Charity Ball, Bargain Blitz, and Sponsor Relations**. The goal of each of this council is to raise the funds needed to support League's mission and efforts to make a positive impact in the community.

FUND DEVELOPMENT COUNCIL MEMBERS

Katerina Hall (Fund Development VP), Lylah Taylor (Assistant Fund Development VP), Taylor Nichols (Sponsor Relations Chair), Amanda Rankin (Bargain Blitz Chair), and Amanda Suehs (Charity Ball Chair)

Charity Ball

MOULIN ROUGE

Charity Ball is the largest fundraiser for The Junior League of Bryan-College Station, Inc. and one of the most prestigious fundraisers in Bryan/College Station. Raising over **\$2,000,000** in its 38-year history, Charity Ball provides the financial resources to support the many remarkable community projects and develop the potential of League members.

This year's Ball was held on Saturday, December 14, 2020, at The Hall of Champions at Kyle Field. Over 800 people attended the Moulin Rouge themed black tie event. Guests were treated to a red carpet entrance, photos under the lights of Kyle Field, dinner, dancing, and live entertainment.

Charity Ball is truly a League effort and a wonderful way to socialize, fundraise, celebrate collective success, and support League's efforts to improve the community through voluntarism and leadership. All the efforts put into Charity Ball paid off, literally, with more than \$74,000 raised from the live auction and a combined \$113,000 raised through silent auction and raffle sales. This year's Ball attendees helped raise more than **\$365,000** to benefit the children and youth of the community!



CHARITY BALL COMMITTEE MEMBERS

Amanda Suehs (Charity Ball Chair), **Morgan Gibbs** (Charity Ball Step Up), Chelsea Briers (Raffle Co-Chair), Allison Burke (Logistics Co-Chair), Ande Burks (Decorations Co-Chair), Megan Chernosky (Live Auction Chair), Andrea Etheridge (Raffle Co-Chair), Katherine Hall (Decorations Co-Chair), Jill Hughson (Logistics Co-Chair), Jamie Johnson (Silent Auction Co-Chair), Alyssa Kieschnick (Festival of Fun Chair), Lauren Rouse (Invitations Chair), Mandy Smith (Silent Auction Co-Chair), and Sonia Watt (Decorations Co-Chair)



Bargain Blitz

BARGAIN BLITZ IS A TWO-DAY RUMMAGE SALE KNOWN THROUGHOUT THE COMMUNITY AS A BARGAIN SHOPPER’S PARADISE!

At Bargain Blitz, shoppers can purchase a large variety of new and gently-used merchandise donated by local businesses, local community members, and League members. Preview Party is held the Friday evening before Sale Day on Saturday. At Preview Party, attendees get a “sneak peek” at the merchandise and a chance to buy items at double the sticker price. The annual Bargain Blitz fundraiser doubles as a service to the community and has contributed over \$400,000 to support League’s mission of improving the community!

Members of the Bargain Blitz Committee spend months overseeing the collection, storage, pricing, and selling of Bargain Blitz merchandise. Bargain Blitz is held the first weekend of March each year at The Expo Center in Bryan.



This year’s Bargain Blitz saw a large number of people in attendance both days. Overall, nearly \$35,000 was raised which supports League’s community projects for the 2020-2021 League year.

Bargain Blitz preparation takes a lot of hard work, but it is worth it to see families go home with “new” items for their families. The Bargain Blitz committee (and many Blitz volunteers) recognize that this event is not only a fundraiser for the Junior League of Bryan-College Station, Inc. but also a community service. Blitz is a moment in which community members and League members have the opportunity to connect. Blitz makes an impact in the community and that is evident by the number of “regulars” that return year after year.

BARGAIN BLITZ COMMITTEE MEMBERS

Amanda Rankin (Chair), **Elizabeth “Lizzy” Sechelski** (Step Up), **Crystal Beato**, **Holly Cargill**, **Jill Gallagher**, **Brittany Gibson**, **Amy Prado**, **Julie Seal**, **Sarah Talbert**, **Dawn Tilby**, and **Breann Tiner**

Sponsor Relations

The Junior League of Bryan-College Station, Inc. would like to recognize and thank all of the members of the 2019-2020 Sponsor Relations committee who develop, foster, and grow League's financial partnerships. The Sponsor Relations committee imparts League's vision and mission to the corporate sponsors and individual donors through the impact League projects have on the children and families within the community.

The Sponsor Relations committee works year round to gather the resources and raise the funds needed to facilitate many of League's community projects like Stuff the Bus. The committee also raises sponsorship dollars through our two fundraising events: **Charity Ball and Bargain Blitz**. These fundraising dollars are used to carry out and support activities related to the vision statement, activities that strengthen the well-being and future of Bryan-College Station's children and youth through the dedicated service of trained volunteers.

The entire Sponsor Relations committee, along with all the members of League, would like to extend a **BIG THANK YOU** to all corporate sponsors and individual donors who helped make League events such a success this year. It is because of YOU that League is able to make such a significant impact on the community, as well as help cultivate and grow the leadership skills of League members. Thank you for your continued support!

SPONSOR RELATIONS COMMITTEE MEMBERS

Taylor Nichols (Chair), **Veronica McDonald** (Step Up), Julie Brod, Crystal Garcia-Williams, Caysi Holt, Ebony Knight, Sarah Krzystofik, Katelyn Lenderman, Casey Lively, Shannon Madlock, Britt McGee, Jordan Morchat, Kayla Renner, and Haley Winkler

Membership Council

Membership Council includes the chairs of the **Hospitality, Membership Development, Education & Training, Nominating, and Placement Committees**. This council facilitates education and training to League members, develops the leadership slate and placement of members across League, and coordinates monthly membership meetings.

MEMBERSHIP COUNCIL MEMBERS

Cristina Vela Recio (Membership VP), Zahra Brown (Nominating Chair), Angela Cobos (Membership Chair), Victoria Evans (Hospitality Chair), Sara Horton (Education & Training Chair), and Kristen Shumbera (Placement Chair)

HOSPITALITY COMMITTEE MEMBERS

Victoria Evans (Chair), Lacey Baze, Gwendolyn Harper, Maddie Hillin, Skyler Waltemathe, and Abby Zike

PLACEMENT COMMITTEE MEMBERS

Kristen Shumbera (Chair), Yvette Contreras, Danielle Kutzenberger, Taylor Long, Amy Schielack, Christy Service, Janice Terrell, Heather Willis, and Bree Wright

MEMBERSHIP DEVELOPMENT COMMITTEE MEMBERS

Angela Cobos (Chair), **Sarah Curylo** (Step Up), Christine Blackburn, Deidre Merseal, and Brittany Schultz

NOMINATING COMMITTEE MEMBERS

Zahra Brown (Chair), **Kristen Shumbera** (Step Up), and Holly Kleypas



Education and Training

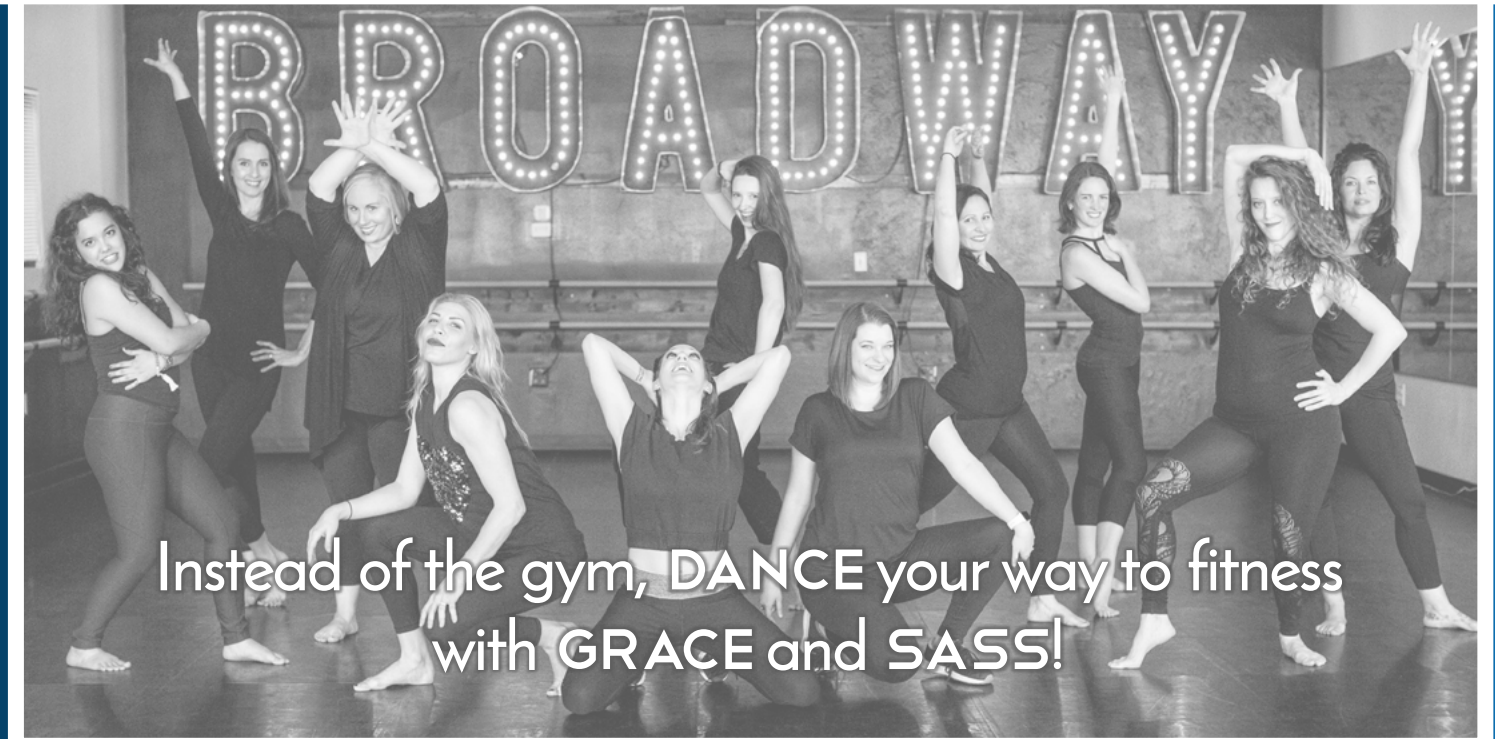
The Education & Training committee functions to develop the potential of women as leaders and strong volunteers, an integral part of the mission of The Junior League of Bryan-College Station, Inc. The committee aims to educate the membership about the functions of League through specialized workshops, educational moments, and online resources. This committee provides members with valuable resources to enhance their leadership, communication, organizational, and professional skills. This past year, the Committee hosted keynote speakers, a web design tutorial, a Christmas cookie decorating class, and a yoga session.

EDUCATION & TRAINING COMMITTEE MEMBERS

Sara Horton (Chair) and Rachel Kopetsky



THE DANCE BARRE



BALLET
TAP
HIP HOP
YOGA
BALLROOM
CONTEMPORARY
CARDIO DANCE
BARRE FITNESS
MUSICAL THEATRE
SOCIAL DANCING

FREE 3-class pass + FREE childcare
Classes are open to all levels!



1865 Briarcrest Drive, Bryan
hello@dancebarrebc.com
dancebarrebc.com
(979) 704-5361

Provisional Class

The 2019-2020 Provisional Class is a dynamic group of women! During their first year as members of The Junior League of Bryan-College Station, Inc., the provisional class participated in all aspects of the League. During the year, the provisional members met as a group to stuff backpacks as part of the Brazos Valley Food Bank Backpack Program. One provisional member even hosted a cookie decorating class on behalf of the Education & Training committee! This year's class truly consisted of an incredible group of women that are already leaders in the community!



FRONT ROW (L TO R):

Sarah Curylo (Membership Development Step Up), Heather White, Melissa Nelson, Courtney Zalesak, Michele Sullivan, Angela Cobos (Membership Development Chair), Shayla Clifton, Glenisha Johnson, Maria Mora, Kelsey Mueller, and Kelsey Howard



BACK ROW (L TO R):

Molly Kulpa, Desiree Gonzales, Ashli McVay, Athena Nix, April Combs, Brittany Schultz (Provisional Advisor), Deidre Merseal (Provisional Advisor), Andrea Bowers, Ashtyn Stephenson, Nataleigh Perez, Taryn Burns, Bridgette Gray, and Molly Jenkins

NOT PICTURED

Christine Blackburn (Provisional Advisor)



LOCAL COMPANY WITH NATIONAL RESOURCES

ABOUT US

CORE is a family owned construction company founded in 1937, which has grown from a small masonry company in Illinois to a national General Contractor with twenty regional offices. Our portfolio consists of both private and public sector work across the United States. CORE provides exceptional building services in a variety of construction disciplines. With each project we undertake, we offer you the resources of over 1,200 employees and a bonding capacity of over \$1.25 Billion. Our company's primary mission is to earn the trust of our employees, partners, and clients. As a business, we are successful when our clients' projects finish on time, within budget, and of the highest quality.

Proud
PARTNER AND SPONSOR OF THE JLBCS

111 University Drive, E., #103
College Station, TX 77840
P: 979-393-0140

COLLEGE STATION | FRISCO | FORT WORTH

www.coreconstruction.com



Sustaining Members

JUNIOR LEAGUE OF BRYAN-COLLEGE STATION

would like to thank the following sustaining members for their collective years of service.

Carla Adamson
Cheryl Allen
Pat Allen-Rice
Jennifer Applewhite
Karen Barfield
Patricia Barrett
Jeannie Barrett
Carol Barrett-Ashfield
Trudy Bennett
Rene Benson
Adrienne Bentz
Susan Birdwell
Elizabeth Blount
Melissa Bohnsack
Randi Boleman
Courtney Boring
M. Denise Boyett
Belle Bramhall
Chelsie Breaux
Janet Briaud
Monica Brown
Annette Browne
Jennifer Burnett
Laura Burris
Dana Busch
Heather Bush
Courtney Cain
Barbie Campbell
Tiffany Cantrell
Jennifer Carpenter
Alyssa Carrigan
Charmen Catlin
Julie Cerny
Kelly Chambers
Dana Chancellor
Sandra Chavarria
Catherine Chessher
Staci Cocanougher
Lauren Cole
Mary Elizabeth Collier

Michelle Colwell
Kara Comte
Gina Cook
Tracy Corrier
Ann Cotton
Angela Cowan
Betty Crain
Rachel Crowder
Jennifer Dalsing
Bonnie Davila
Kellie Davis
Cynthia Davis
Sue Ellen Davis
Angela DeLuca
Donna Dennard
Judy Dethloff
Renea DeWitt
Danielle Dickey
Elizabeth Dickey
Ashley Doss
Mary Eikenhorst
Kori Fellows
Lisa Fritz
Florence Furubotn
Erin Gage
Jennifer Ganter
Julia Gardner
Tamara Garza
Adrienne Gattis
Annette Geffert
Carolyn Gentry
Rhonda Gidley
Lisa Giles
Margaret Gillam
Michelle Gimbert
Lacey Glenewinkel
Elaina Glockzin
Celia Goode-Haddock
Chrissie Granberry
Nuala Haddox

Trisha Hammit
Christy Hartman
Amy Hartsell
Mary Michael Hatcher
Lizett Hawkins
Barbara Hawthorne
Sarah Hendler
Gretchen Hendler
Alice Hickerson
Susan Hilton
Martha Hirsch
Ann Hix
Maritza Hoffman
Colleen Holmes
Kara Holmgreen
Judy Holt
Suzanne Holt
Kassi Horner
Virginia Howard
Jenny Guozhen Huang
Jan Hubbell
Shelly Humphrey
Margaret Jakubik
Andrea James
Mandie James
Sherry Jennings
Denise Joiner
Gwyn Jones
Janet Jones
Sylvia Jones
Kathleen Joyce
Lacey Junek
Tracie Keller
Priscilla Kelly
Stacey Kiessling
Cassandra Kilgore
Jeannie Kipp
Jordan Kleckley
Katherine Kleemann
Vicky Kramer

Victoria Krawczynski
Kari Krueger
Leslie Kutzenberger
Donna Lee LaMar
Chelsea Lamme
Katy Lane
Christine Larsen
Monica Latham
Stephanie Leatherwood
Janet Lee
Rebecca Lewis
Karen Loehr
Cathy Lyles
Denise Maggard
Tyan Magruder
Stephanie Malechek
Bridget Mariott
Sarah Marrs
Marilyn Martell
Toni Martinez
Cerissa Martinez
Christine Mason
Debra Matthews
Emily Mayerhoff
Kara Mayland
Randi Mays-Knapp
Meredith McAuliffe
Caroline McDonald
Janie McDougal
Erin McFarlane
Melissa McIlhaney
Janice McKean
Anne McKellar
Cassie Medlin
Stephanie Meredith
Carrie Mitchell
Stephanie Mitchell
Debra Mullet
Jennifer Nations
Belinda Neal
Sharon Neelley
Sophie Newton
Laura Normand
Courtney Noynaert
Sherri Nunley

Deborah O'Briant
C. Nichole Overman
Tracy Paine
Sherrie Patke
Michelle Peacock
Joyce Perkins
Amy Perkins
Annette Peters
Natalie Pine
Irma Pineda
Julie Porter
Kass Prince
Merrilee Prochaska
Laurie Quinn-Watson
Mary Sue Rabe
Robin Rackley
Chris Ransom
Sharon Reece
Julianna Reese
Kay Rice
Jane Riley
Marci Rodgers
Karen Royal
Cherry Ruffino
Rebecca Russell
Candace Rust
Mary Ruth
Martha Salzer
Cynthia Sampson
Ruth Aileen Samson
Peggy Samson
Marsha Sanford
Crystal Santana
Tracy Schieffer
Sara Schoenvogel
Ashlee Schoenvogel
Tami Scott
Chavonne Scott
Hayley Scotti
Deanna Seabolt
Tara Seely
Debra Senter
Kristen Shepperd
Jennifer Sims
Beverly Smith

Mary Irma Smith
Chris Spang
Lunette Stacy
Cheri Stanton
Janet Steines
Patricia Sterner
Karen Story
Nancy Street
Amy Supak
Elinore Tecson
Cortney Tenhet
Daphanie Thomasson
Tammy Tiner
Betty Trant
Sandi Trapani
Martha Trotter
Marcy Ullmann
Monica Van Nest
Callie Varisco
Marsha Varisco
Susan Vestal
Ann Von Gonten
Laura Wagner
Kelly Waguespack
Jodi Warner
Sheryl Welford
Whitney West
Leslie Whitmire
Mary Whitworth
Ann Wiatt
Kathryn Wier
Julie Wilke
Angela Wilke
Robin Williamson
Danielle Wivagg
Cherry Kay Wolf
Jennifer Wood
Becky Wood
Lana Wood
Katelyn Yarnold
Michelle Young
Harriet Youngblood
Marilyn Youngkin
Rae Zurcher

2019 NEW SUSTAINING MEMBERS

Jen Brazeal
Chelsea Briers
Zahra Brown
Cali Harper
Jennifer Hebert
Jill Hughson
Holly Kleypas
Sarah Krzystofik
Yecika Luna
Ashley Merryman
Ellen Moritz
Melanie Pollard
Baili Rhodes
Erin Schneider
Christy Service
Bree Wright
Katie Zwahr

JLBCS FOUNDING MEMBERS

Betty Benbow
Westbrook
Peggy Van Pelt Gillam
Donna White LaMar
Lunette Varisco Stacy
Ann Cobb Wiatt

JLBCS PAST PRESIDENTS

1982-1983
Betty Benbow Westbrook
1984-1985
Ann Cobb Wiatt
1985-1986
Lunette Varisco Stacy
1986-1987
Christopher Sanderson Spang
1987-1988
Mary Evelyn Merritt White
1988-1989
Judi Russell Richards

1989-1990
Susan Scott Birdwell
1990-1991
Barbara Thomas Vance
1991-1992
Marci Moore Rodgers
1992-1993
Sue Ellen Metcalfe Davis
1993-1994
Julia Wilkes Gardner
1994-1995
Nancy James Street
1995-1996
Jan Densmore Lee
1996-1997
Carol Hickman Barrett
1997-1998
Carolyn Floto Gentry
1998-1999
Tammy Tiner
1999-2000
Maritza Pena Hoffman
2000-2001
Wendie Warren
2001-2002
Kathy Reese Joyce
2002-2003
Marilyn McBee Martell
2003-2004
Chris Ransom
2004-2005



Gina Cook
2005-2006
Kara Holmgreen
2006-2007
Christine Larsen
2007-2008
Adrienne Bentz
2008-2009
Sheryl Welford
2009-2010
Sherry Jennings
2010-2011
Trudy Bennett
2011-2012
Lizett Hawkins
2012-2013
Stephanie Coomes
2013-2014
Erin Gage
2014-2015
Kassi Horner
2015-2016
Cassie Medlin
2016-2017
Rachel Crowder
2017-2018
Jill Hughson
2018-2019
Sarah Krzystofik

BRYAN BROADCASTING

Radio | Publications | Digital



THANK YOU TO OUR GRACIOUS 2019-2020 SPONSORS

PRESENTING SPONSORS



PRESIDENTIAL SPONSORS



PARTNERS IN HONOR

12TH MAN
VENUES



BRYAN
BROADCASTING
Radio | Publications | Digital



PATRON

Aggie Hospitality / Levy*
Artisan's Rejuvenation Med Spa*
CapRock Health System
Element Retirement & Investment Consultants
JP Beato III Photography*
Kimley-Horn
Paragon Financial Advisors
Pure Bliss Spa*
Reece Homes
Signature Care Emergency Center

CLUB

A&M Forensics and Engineering, Inc.
ABC Home & Commercial Services
BB&T
C.C. Creations
CENTURY 21 BEAL
CHI St. Joseph Health
Dusty's Plumbing LLC*
Gessner Engineering
HBI Office Solutions, Inc.*
Irongate Custom Homes
Joseph & Chelsea Briers*
Lice Clinics of America
Malek Heating & Air
Mercedes-Benz of College Station
Michelob*
Pinnacle Homestead Management, Inc.
Prosperity Bank
Taylor Anne Nichols
Texas A&M University Corps of Cadets -
Office of the Commandant* Texas Filmworks*
The Bank & Trust
Tim Bailey Plumbing
Tone 360 Fitness Studio*
Urban Optics*
Urban Table*
Western Son Distillery*

FRIEND

Advanced Care Endodontics of Bryan-College
Station
Brazos Valley Oral & Maxillofacial Surgery
Briaud Financial Advisors
City of College Station
Details Party Rental*
Guaranty Bank & Trust
Lamar Outdoor Advertising*
Lone Star Lodge - Fairplay, CO*
Lone-Star Roof Systems, LP
Morpha Consulting*
Norte Hunters*
Ronin Farm & Restaurant*
The Tippy Bean Coffee and Wine Bar
The Clubs at Houston Oaks*
Thompson & Sons Landscaping*
Sunbelt Rentals Oil & Gas Services

DONOR

Audio Video, Kathy & Gene Joyce*
Bruchez, Goss, Thornton, Meronoff & Briers, P.C.
BTU
Century Square
College Station Plumbing, LLC
Ellen & Robert Moritz
Marca T. Ewers, Attorney at Law

Naturally Flawless Hair & Makeup Design*
POP! Party Co.*
Spherion Staffing
Standley Feed & Seed*
The Arkitek Studio, Inc.
University Title Company
Wells Fargo Bank

SUPPORTER

1st Alliance Mortgage
Aggieland Title Company
Aggieland Express Car Wash*
Aggieland Aesthetics & Brows by Lyndsey*
Arrow S Pest Control*
Bass Plumbing, LLC
Brazos Industries*
Britt McGee, REALTOR®
Blue Baker*
Boss Firearms*
C6 Energy Services
Cashion Dental
Chef Fitzgerald*
Clear Water Pool Company
Gina Cook*
Davis & Davis Lawyers / Sue Ellen and Fred Davis
DJ Rob*
D.R. Horton - America's Builder
Eighty Deuce Cookers*
ELBIE SALON SUITE by Lauren Adair*
Empower Behavioral Health*
EvolveAir*
Gilmore Electric Express*
hairby.kellyC*
Hash Salon*
Kiddie Academy
Kieschnick Construction, Inc.
LASER Answering Service
LoneStar Horticultural Services, Inc.
Mathnasium*
McCord Engineering, Inc.
M&E Fisher Photography*
Ranger Creek Goose*
Renner Chiropractic
Rick's Home Services
Sabi Boutique*
Southside Social Club*
Survival Swim School of the Brazos Valley*
Terracon Consultants, Inc.
University Flowers*
Veritas Wine and Bistro*
West, Webb, Allbritton & Gentry, P.C.
Whiskey Charlie's Liquor Stores
White Elm Day Spa*
Yoga Pod*

*in-kind sponsor

Charitable gifts to The Junior League of Bryan-College
Station, Inc. include many sponsorship benefits. Please email
sponsorships@jlbcs.org and ask about the JLBCS Corporate
Sponsorship packages for details.



DAVID GARDNER'S
JEWELERS & GEMOLOGISTS

911 University Drive E. College Station, TX 77840
979.268.0800 | www.davidgardnersjewelers.com